

Check all dimensions and site conditions prior to commencement of any work, the purchase or ordering of any materials, fittings, plant, services or equipment and the preparation of shop drawings and/or the fabrication of any components.

Do not scale drawings - refer to figured dimensions only. Any discrepancies shall immediately be referred to the architect for clarification.

All drawings may not be reproduced or distributed without prior permission from the architect.

Basement 03 = 166
Basement 02 = 143
Basement 01 = 35

Total cars = 344

Total cars includes 28 Accessible parking spaces

Total Bicycle spaces = 59
Total Motorcycle spaces = 7
Total Storage cages = 295

2 04.04.14 Revised DA submission jh js

1 25.11.13 Issue for DA jh js
Revision Date Description Initial Checked

Wintner Property Group
Waitara Avenue
Basement Level 03

Scale 1:250@A1
Drawn JH Checked JS
Project No. s11504
Status Development Application
Plot Date 4/4/2014 4:13 PM
Plot File S:11500-11599e11504_wintner_waitaraave00_maincadplot...
Drawing No. DA02.101[1] Revision

DA02.101[1]

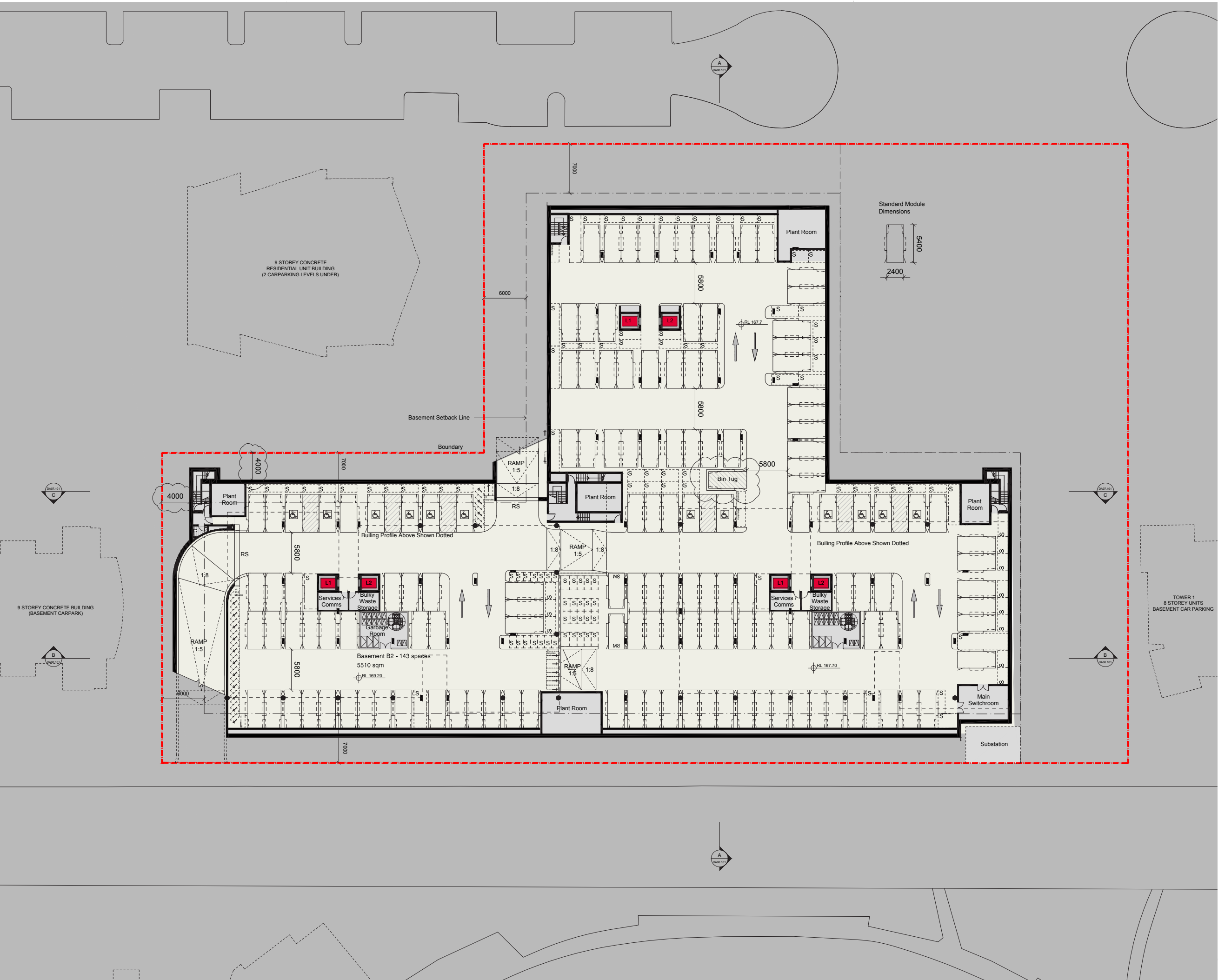
2

Melbourne 1 Nicholson Street
Melbourne VIC 3000 Australia
T 03 8564 6200 F 03 8564 6300
email melb@batesmart.com.au
http://www.batesmart.com.au

Sydney 1/243 Liverpool Street
East Sydney NSW 2010 Australia
T 02 8354 5100 F 02 8354 5199
email syd@batesmart.com.au
http://www.batesmart.com.au

Bates Smart Pty Ltd ABN 70 004 999 400

BATESSMART



Check all dimensions and site conditions prior to commencement of any work, the purchase or ordering of any materials, fittings, plant, services or equipment and the preparation of shop drawings and/or the fabrication of any components.

Do not scale drawings - refer to figured dimensions only. Any discrepancies shall immediately be referred to the architect for clarification.

All drawings may not be reproduced or distributed without prior permission from the architect.

Basement 03 = 166
Basement 02 = 143
Basement 01 = 35

Total cars = 344

Total cars includes 28 Accessible parking spaces

Total Bicycle spaces = 59
Total Motorcycle spaces = 7
Total Storage cages = 295

2	04.04.14	Revised DA submission	jh	js
1	25.11.13	Issue for DA	jh	js
Revision	Date	Description	Initial	Checked

Wintner Property Group
Waitara Avenue
Basement Level 02

Scale	1:250@A1		
Drawn	JH	Checked	JS
Project No.	s11504		
Status	Development Application		
Plot Date	4/4/2014 12:51 PM		
Plot File	S:\11500-11599\11504_wintner_waitaraave\00_main\cad\plots\DA02.102[1].dwg		
Drawing No.		Revision	

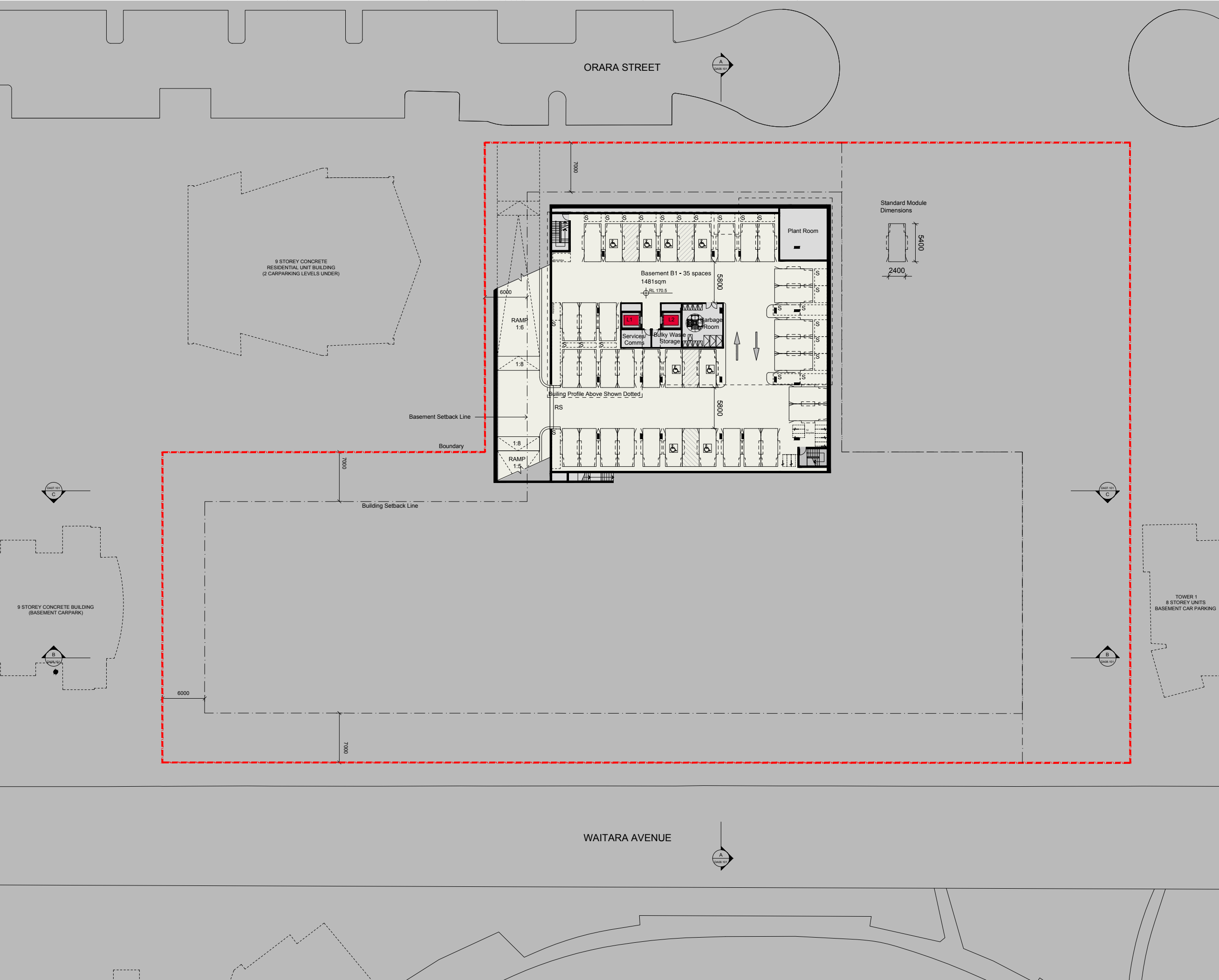
DA02.102[1] 2

Melbourne 1 Nicholson Street
Melbourne VIC 3000 Australia
T 03 8664 6200 F 03 8664 6300
email melb@batesmart.com.au
http://www.batesmart.com.au

Sydney 1/243 Liverpool Street
East Sydney NSW 2010 Australia
T 02 8354 5100 F 02 8354 5199
email syd@batesmart.com.au
http://www.batesmart.com.au

Bates Smart Pty Ltd ABN 70 004 999 400

BATESSMART



Check all dimensions and site conditions prior to commencement of any work, the purchase or ordering of any materials, fittings, plant, services or equipment and the preparation of shop drawings and/or the fabrication of any components.

Do not scale drawings - refer to figured dimensions only. Any discrepancies shall immediately be referred to the architect for clarification.

All drawings may not be reproduced or distributed without prior permission from the architect.

Basement 03	= 166
Basement 02	= 143
Basement 01	= 35

Total cars = 344

Total cars includes 28 Accessible parking spaces

Total Bicycle spaces	= 59
Total Motorcycle spaces	= 7
Total Storage cages	= 295

2 04.04.14 Revised DA submission jh js

1	25.11.13 Issue for DA	jh	js
Revision	Date	Description	Initial

Winten Property Group
Waitara Avenue
Basement Level 01

Scale	1:250@A1		
Drawn	JH	Checked	JS
Project No.	s11504		
Status	Development Application		
Plot Date	4/4/2014 12:52 PM		
Plot File	S:\11500-11599\11504_winten_waitaraave\00_main\cad\plots\DA02.103[1].dwg		

Melbourne 1 Nicholson Street
Melbourne VIC 3000 Australia
T 03 8564 6200 F 03 8564 6300
email melb@batesmart.com.au
http://www.batesmart.com.au

Sydney 1/243 Liverpool Street
East Sydney NSW 2010 Australia
T 02 8354 5100 F 02 8354 5199
email syd@batesmart.com.au
http://www.batesmart.com.au

Bates Smart Pty Ltd ABN 70 004 999 400

BATESSMART



Check all dimensions and site conditions prior to commencement of any work, the purchase or ordering of any materials, fittings, plant, services or equipment and the preparation of shop drawings and/or the fabrication of any components.

Do not scale drawings - refer to figured dimensions only. Any discrepancies shall immediately be referred to the architect for clarification.

All drawings may not be reproduced or distributed without prior permission from the architect.

Plan Legend:

- 1 Bedroom Apt
- 2 Bedroom Apt
- 3 Bedroom Apt

The glass wall opening to the terrace from the lounge area of each apartment is a sliding door open able to 45% of its area
sp: spandrel at 1100m high

Total visitor Bicycle spaces = 30

2	04.04.14 Revised DA submission	jh	js
1	25.11.13 Issue for DA	jh	js
Revision Date	Description	Initial	Checked

Wintan Property Group
Waitara Avenue
Level 00
Ground

Scale	1:250@A1	Checked	JS
Drawn	JH	Checked	JS
Project No.	s11504		
Status	Development Application		
Plot Date	7/4/2014 10:32 AM		
Plot File	S:\11500-11599s11504_wintan_waitaraave\00_main\cad\plots\... \A\DA02.20111.dwg		
Drawing No.	DA02.201[1]	Revision	2

Melbourne 1 Nicholson Street
Melbourne VIC 3000 Australia
T 03 8664 6200 F 03 8664 6300
email melb@batesmart.com.au
http://www.batesmart.com.au

Sydney 1/243 Liverpool Street
East Sydney NSW 2010 Australia
T 02 8354 5100 F 02 8354 5199
email syd@batesmart.com.au
http://www.batesmart.com.au

Bates Smart Pty Ltd ABN 70 004 999 400

BATESSMART



Check all dimensions and site conditions prior to commencement of any work, the purchase or ordering of any materials, fittings, plant, services or equipment and the preparation of shop drawings and/or the fabrication of any components.

Do not scale drawings - refer to figured dimensions only. Any discrepancies shall immediately be referred to the architect for clarification.

All drawings may not be reproduced or distributed without prior permission from the architect.

Plan Legend:

- 1 Bedroom Apt
- 2 Bedroom Apt
- 3 Bedroom Apt

The glass wall opening to the terrace from the lounge area of each apartment is a sliding door open able to 45% of its area

2	04.04.14 Revised DA submission	jh	js	
1	25.11.13 Issue for DA	jh	js	
Revision	Date	Description	Initial	Checked

Winten Property Group
Waitara Avenue
Levels 01-02



Scale	1:250@A1		
Drawn	JH	Checked	JS
Project No.	s11504		
Status	Development Application		
Plot Date	4/4/2014 2:13 PM		
Plot File	S:\11500-11599\11504_winten_waitaraave\00_main\cad\plots\...DA02.202[1].dwg		
Drawing No.	Revision		

DA02.202[1] 2

Melbourne 1 Nicholson Street
Melbourne VIC 3000 Australia
T 03 8664 6200 F 03 8664 6300
email melb@batesmart.com.au
http://www.batesmart.com.au

Sydney 1/243 Liverpool Street
East Sydney NSW 2010 Australia
T 02 8354 5100 F 02 8354 5199
email syd@batesmart.com.au
http://www.batesmart.com.au

Bates Smart Pty Ltd ABN 70 004 999 400

BATESSMART



Check all dimensions and site conditions prior to commencement of any work, the purchase or ordering of any materials, fittings, plant, services or equipment and the preparation of shop drawings and/or the fabrication of any components.

Do not scale drawings - refer to figured dimensions only. Any discrepancies shall immediately be referred to the architect for clarification.

All drawings may not be reproduced or distributed without prior permission from the architect.

Plan Legend:

- 1 Bedroom Apt
- 2 Bedroom Apt
- 3 Bedroom Apt

The glass wall opening to the terrace from the lounge area of each apartment is a sliding door open able to 45% of its area

2	04.04.14 Revised DA submission	jh	js	
1	25.11.13 Issue for DA	jh	js	
Revision	Date	Description	Initial	Checked

Winten Property Group
Waitara Avenue
Level 03

Scale	1:250@A1		
Drawn	JH	Checked	JS
Project No.	s11504		
Status	Development Application		
Plot Date	4/4/2014 2:13 PM		
Plot File	S:\11500-11599\11504_winteraave\00_main\cad\plots\...DA02.203[1].dwg		
Drawing No.	Revision		

Melbourne 1 Nicholson Street
Melbourne VIC 3000 Australia
T 03 8664 6200 F 03 8664 6300
email melb@batesmart.com.au
http://www.batesmart.com.au

Sydney 1/243 Liverpool Street
East Sydney NSW 2010 Australia
T 02 8354 5100 F 02 8354 5199
email syd@batesmart.com.au
http://www.batesmart.com.au

Bates Smart Pty Ltd ABN 70 004 999 400

BATESSMART



Check all dimensions and site conditions prior to commencement of any work, the purchase or ordering of any materials, fittings, plant, services or equipment and the preparation of shop drawings and/or the fabrication of any components.

Do not scale drawings - refer to figured dimensions only. Any discrepancies shall immediately be referred to the architect for clarification.

All drawings may not be reproduced or distributed without prior permission from the architect.

Plan Legend:

- 1 Bedroom Apt
- 2 Bedroom Apt
- 3 Bedroom Apt

The glass wall opening to the terrace from the lounge area of each apartment is a sliding door open able to 45% of its area

2	04.04.14 Revised DA submission	jh	js	
1	25.11.13 Issue for DA	jh	js	
Revision	Date	Description	Initial	Checked

Winten Property Group
Waitara Avenue
Level 04

Scale	1:250@A1		
Drawn	JH	Checked	JS
Project No.	s11504		
Status	Development Application		
Plot Date	4/4/2014 2:16 PM		
Plot File	S:\11500-11599\11504_winten_waitaraave\00_main\cad\plots\...DA02.204\1.dwg		
Drawing No.	Revision		

Melbourne 1 Nicholson Street
Melbourne VIC 3000 Australia
T 03 8664 6200 F 03 8664 6300
email melb@batesmart.com.au
http://www.batesmart.com.au

Sydney 1/243 Liverpool Street
East Sydney NSW 2010 Australia
T 02 8354 5100 F 02 8354 5199
email syd@batesmart.com.au
http://www.batesmart.com.au

Bates Smart Pty Ltd ABN 70 004 999 400

BATESSMART

All drawings may not be reproduced or distributed without prior permission from the architect.

☐ 1 Bedroom Apt
☐ 2 Bedroom Apt
☐ 3 Bedroom Apt

The glass wall opening to the terrace from the lounge area of each apartment is a sliding door open able to 45% of its area





Check all dimensions and site conditions prior to commencement of any work, the purchase or ordering of any materials, fittings, plant, services or equipment and the preparation of shop drawings and/or the fabrication of any components.

Do not scale drawings - refer to figured dimensions only. Any discrepancies shall immediately be referred to the architect for clarification.

All drawings may not be reproduced or distributed without prior permission from the architect.

Plan Legend:

- 1 Bedroom Apt
- 2 Bedroom Apt
- 3 Bedroom Apt

The glass wall opening to the terrace from the lounge area of each apartment is a sliding door open able to 45% of its area

2	04.04.14	Revised DA submission	jh	js
1	25.11.13	Issue for DA	jh	js
Revision	Date	Description	Initial	Checked

Winten Property Group
Waitara Avenue
Levels 06-07

Scale	1:250@A1		
Drawn	JH	Checked	JS
Project No.	s11504		
Status	Development Application		
Plot Date	4/4/2014 2:17 PM		
Plot File	S:\11500-11599\11504_winten_waitaraave\00_main\cad\plots\...DA02.206[1].dwg		
Drawing No.	Revision		

Melbourne 1 Nicholson Street
Melbourne VIC 3000 Australia
T 03 8664 6200 F 03 8664 6300
email melb@batesmart.com.au
http://www.batesmart.com.au

Sydney 1/243 Liverpool Street
East Sydney NSW 2010 Australia
T 02 8354 5100 F 02 8354 5199
email syd@batesmart.com.au
http://www.batesmart.com.au

Bates Smart Pty Ltd ABN 70 004 999 400

BATESSMART



Check all dimensions and site conditions prior to commencement of any work, the purchase or ordering of any materials, fittings, plant, services or equipment and the preparation of shop drawings and/or the fabrication of any components.

Do not scale drawings - refer to figured dimensions only. Any discrepancies shall immediately be referred to the architect for clarification.

All drawings may not be reproduced or distributed without prior permission from the architect.

Plan Legend:

- 1 Bedroom Apt
- 2 Bedroom Apt
- 3 Bedroom Apt

The glass wall opening to the terrace from the lounge area of each apartment is a sliding door open able to 45% of its area

2	04.04.14 Revised DA submission	jh	js	
1	25.11.13 Issue for DA	jh	js	
Revision	Date	Description	Initial	Checked

Winten Property Group
Waitara Avenue
Level 08

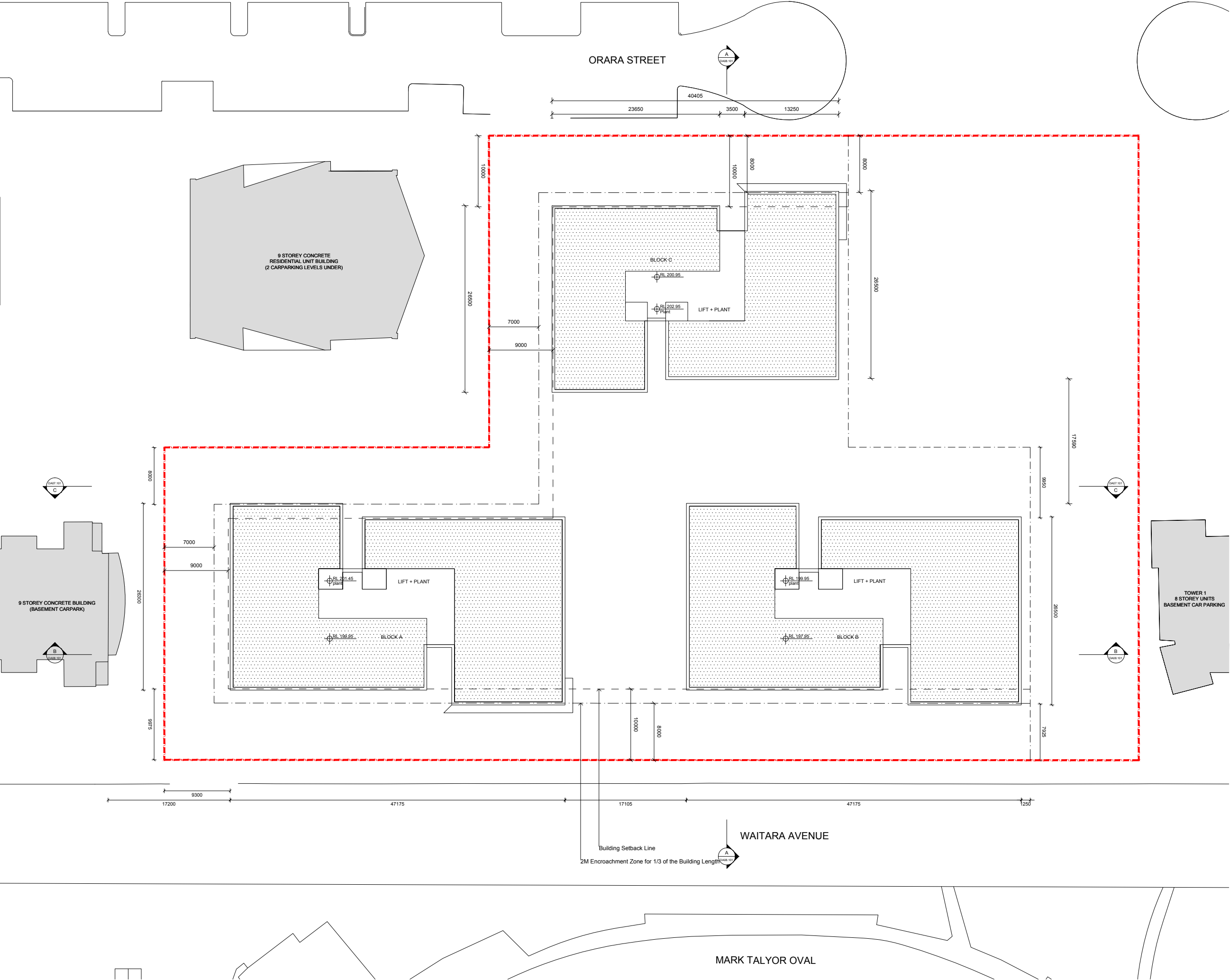
Scale	1:250@A1		
Drawn	JH	Checked	JS
Project No.	s11504		
Status	Development Application		
Plot Date	4/4/2014 2:17 PM		
Plot File	S:\11500-11599\11504_winten_waitaraave\00_main\cad\plots\...DA02.207[1].dwg		
Drawing No.	Revision		

Melbourne 1 Nicholson Street
Melbourne VIC 3000 Australia
T 03 8664 6200 F 03 8664 6300
email melb@batesmart.com.au
http://www.batesmart.com.au

Sydney 1/243 Liverpool Street
East Sydney NSW 2010 Australia
T 02 8354 5100 F 02 8354 5199
email syd@batesmart.com.au
http://www.batesmart.com.au

Bates Smart Pty Ltd ABN 70 004 999 400

BATESSMART



Check all dimensions and site conditions prior to commencement of any work, the purchase or ordering of any materials, fittings, plant, services or equipment and the preparation of shop drawings and/or the fabrication of any components.

Do not scale drawings - refer to figured dimensions only. Any discrepancies shall immediately be referred to the architect for clarification.

All drawings may not be reproduced or distributed without prior permission from the architect.

2	04.04.14 Revised DA submission	jh	js
1	25.11.13 Issue for DA	jh	js
Revision	Date	Description	Initial
Checked			

Winten Property Group
Waitara Avenue
Roofplan

Scale	1:250@A1
Drawn	JH
Checked	JS
Project No.	s11504
Status	Development Application
Plot Date	4/4/2014 2:17 PM
Plot File	S:\11500-11599\11504_winteraave\00_main\cad\plots\DA02.208[1].dwg
Drawing No.	Revision

DA02.208[1] 2

Melbourne 1 Nicholson Street
Melbourne VIC 3000 Australia
T 03 8664 6200 F 03 8664 6300
email melb@batesmart.com.au
http://www.batesmart.com.au

Sydney 1/243 Liverpool Street
East Sydney NSW 2010 Australia
T 02 8354 5100 F 02 8354 5199
email syd@batesmart.com.au
http://www.batesmart.com.au

Bates Smart Pty Ltd ABN 70 004 999 400

BATESSMART